

LS Central (19.0-19.5)

Release Notes

May 26, 2022

© 2022 LS Retail ehf. All rights reserved.
All trademarks belong to their respective holders.

Contents

| | |
|---|----------|
| LS Central 19.5 Release Notes | 1 |
| About This Release | 1 |
| LS Central 19.5 | 1 |
| LS Central AL code | 1 |
| LS Central extension | 1 |
| Important Notices! | 2 |
| Important fix for users of EFT (LS Pay module) in Android AppShell | 2 |
| OAuth web service authentication | 2 |
| New or Enhanced Features | 3 |
| Actionable Insights | 3 |
| Transform Data into Insights and Actions | 3 |
| Actionable Insights Base Pack | 3 |
| KPI Calculation Workflow | 3 |
| Action Hub: Manage Information in One Central Place | 3 |
| BackOffice | 4 |
| Add Shipment Number to Shipment Webhook Requests | 4 |
| Archiving Functionality for LSC POS Card Print Text Table 990089543 | 4 |
| .Net XML and Network Credentials Assemblies Removed | 4 |
| New Key Added to Member Sales Entry Table | 4 |
| Option Added in the Pre-action Table | 4 |
| SPG: Log Security Check Response | 4 |
| SPG: Order Check | 4 |
| Web Service Authentication Methods | 4 |
| Food and Beverages (F&B) | 5 |
| Self-Service Kiosk | 5 |
| Adding a Single Item to Cart | 5 |
| QR Codes for Dining Tables | 5 |

| | |
|--|----------|
| LS Activity | 5 |
| Banquet Event Order (BEO) Management | 5 |
| Activity Group Card Simplified | 5 |
| Booking Activities Prevented Outside Staying Period | 6 |
| Default TODAY in Activity Group Reservation Line | 6 |
| Manual Price Change on Activity Line on POS | 6 |
| LS Hotels | 6 |
| Invoice Management: Deposit Line Enhancement | 6 |
| New "Reserve Room" Functionality in LS Hotels Web API | 6 |
| LS Recommend | 7 |
| Improved LS Recommend, a Cloud-Based Recommendation Engine | 7 |
| LS Staff Management | 7 |
| Exchange Shifts Between Different Locations | 7 |
| POS Commands | 7 |
| Other | 8 |
| LS Central Help | 8 |
| Fixed Issues | 8 |
| BackOffice | 8 |
| Customer Order Fixes | 8 |
| Incorrect Payment | 8 |
| Input Window Locks | 8 |
| Modifications After Pressing Total or Cancel Order | 8 |
| Permission Sales Shipment Header | 8 |
| Error When Upgrading from Version 19 to 19.3 | 8 |
| Insert not Counted Action Improved | 8 |
| Printing of Posted Safe Transfer | 8 |
| Scheduler Time Slot Does not Work as Intended | 8 |
| Unable to Identify Store ID When Using Sourcing Location ... | 9 |
| Food and Beverages (F&B) | 9 |
| Cash & Safe Management | 9 |
| LS Activity | 9 |
| Email Script Error | 9 |

| | |
|---|-----------|
| Replenishment | 9 |
| Replenishment Data Profile Assigned to Item Category | 9 |
| LS Central 19.4 Release Notes | 11 |
| About This Release | 11 |
| LS Central 19.4 | 11 |
| LS Central AL code | 11 |
| LS Central extension | 11 |
| Important Notice! | 12 |
| Important fix for users of EFT (LS Pay module) in Android AppShell | 12 |
| New or Enhanced Features | 12 |
| Retail | 12 |
| BackOffice | 12 |
| Customer Information Updated via POS | 12 |
| Customer Order Sourced from Vendor | 12 |
| Fashion: Obsolete Procedures in Codeunit LSC Item Variants Functions | 12 |
| LS Central Code Refactored to Use New BC Email Functions Instead of SMTP Codeunit | 13 |
| LS Central POS | 13 |
| Mgr: Yes/No Tag in POS Status Bar | 13 |
| Hospitality | 13 |
| Delivery and Takeout Constants Moved from Hospitality Setup to Store Level | 13 |
| LS Activity | 13 |
| API: Ticket Admission Control | 13 |
| Cancellation Policy on Member/Client and Customer Level | 13 |
| Matrix Resource Image and Tooltip | 14 |
| New Copy Feature in Activities | 14 |
| POS Command CHECKACCESS Updated | 14 |
| Special Characters in Matrix Hover Text | 14 |
| LS Hotels | 14 |
| Group Support in Hotels Web Service | 14 |
| New Method to Add Items to Reservation Extra | 14 |

| | |
|---|-----------|
| LS KDS | 14 |
| Rush Recalled Orders | 14 |
| Fixed Issues | 15 |
| Retail | 15 |
| BackOffice | 15 |
| Distribution Location Web Override Credential | 15 |
| Mix & Match Calculation | 15 |
| LS Central POS | 15 |
| Changing Price and Qty for a Scale Item | 15 |
| Replenishment | 15 |
| Vendor No. Selection in Replenishment Calculation | 15 |
| LS Central 19.3 Release Notes | 17 |
| About This Release | 17 |
| LS Central 19.3 | 17 |
| LS Central AL code | 17 |
| LS Central extension | 17 |
| New or Enhanced Features | 18 |
| Retail | 18 |
| BackOffice | 18 |
| Mix & Match: New Discount Setup Possibilities | 18 |
| New Web Service | 18 |
| Redesigned Role Centers | 18 |
| LS Central POS | 18 |
| Double-sided Printing Implemented | 18 |
| Hospitality | 19 |
| Attributes in a New POS Panel and Linking Special Requests to Attributes | 19 |
| New FAB Takeout Panel on POS | 19 |
| LS Activity | 19 |
| Edit Resource Availability and Schedule | 19 |
| LS Hotels | 20 |
| Confirm Activities in a Reservation When Adding a Guest ... | 20 |
| Detailed Revenue Entry Table: Improved Sorting | 20 |

| | |
|--|-----------|
| Hotel Invoice Management With Open Sales Invoice or Open POS Transaction | 20 |
| New Tile Showing Hotel Reservations With Draft Activities | 20 |
| Rate Attribute Unit Prices | 20 |
| POS Commands | 20 |
| Other | 22 |
| LS Central Demo Data Company | 22 |
| LS Central Help | 22 |
| Fixed Issues | 22 |
| Retail | 22 |
| General | 22 |
| Check Function Added in Customer Orders | 22 |
| Upgrade Error from Version 18.4 to 19.x | 22 |
| Use Full Remaining Balance, POS Data Entry Type | 22 |
| BackOffice | 23 |
| Fashion: Rename of Variants for Items with Variant Framework | 23 |
| Requesting Access to LS Central Internal Code for SaaS | 23 |
| LS Central POS | 23 |
| Functionality Profile: Logoff Function | 23 |
| Replenishment | 23 |
| Transfer Order Creation in Purchase Replenishment Journal with Cross Docking | 23 |
| Vendor Performance Line Update | 23 |
| LS Central 19.2 Release Notes | 25 |
| About This Release | 25 |
| LS Central 19.2 | 25 |
| LS Central AL code | 25 |
| LS Central extension | 25 |
| New or Enhanced Features | 26 |
| Retail | 26 |
| General | 26 |
| AutoTest and EFT: CreateTenderTypeCard Added and Other Changes | 26 |

| | |
|--|-----------|
| Download Replication Request and Packet Data | 26 |
| Request for Event Publishers | 26 |
| BackOffice | 26 |
| Customer Order: Shipping Agent and Package Tracking Code | 26 |
| Data Entry Type: Print Remaining Balance | 26 |
| Events Added Since the 19.0 Code Freeze | 26 |
| Refactored SPG Profiles | 26 |
| Send Receipt by Email for POS Transactions | 27 |
| Support Data Translation for Item HTML | 27 |
| Web Service to Send Email With Password Code for Password Reset | 27 |
| LS Central POS | 27 |
| Long-running Task Indicator in POS | 27 |
| LS Hardware Station | 27 |
| Locking System for EFT in Hardware Station for Manual Session Control | 27 |
| Scale Certification Dialog and Command Changes | 27 |
| Replenishment | 28 |
| Effective Inventory in Stock Coverage | 28 |
| Store Capacity Effective Inventory Settings Moved to a New FastTab | 28 |
| Retail Budgets: Discontinue Import of Obsoleted Value Types | 28 |
| Retail Sales Budgets | 28 |
| Retail Purchase Budgets | 28 |
| Hospitality | 29 |
| Onbefore/After RunCommand | 29 |
| Run SelectRes Command When Seating an Activity Reservation at a Table | 29 |
| Table Management: Button for Sending Courses and Non-coursing Items to Kitchen | 29 |
| LS Activity | 29 |
| Activity Matrix Enhancements | 29 |
| Flexible Booking Time for Activity User | 29 |

| | |
|---|-----------|
| LS Hotels | 30 |
| Confirming Activities in a Reservation When Dates Are Changed | 30 |
| Group Total in Hotel Group Reservation Card FactBox | 30 |
| Hotel Res. List: Cancelled Reservations not Shown | 30 |
| Hotel Reservation Page: IATA No./Commission Field | 30 |
| Improved Sync Between Guest List and Reservation Children Records | 30 |
| Prompt for Applying Cancellation Policy (Cancel, No Show, Early Checkout) | 30 |
| Role Budget Adjustment for Hotels | 30 |
| Room Allocation List: Room Filters Added | 31 |
| Room Rate Change Page: Option to Apply to All Room Types | 31 |
| Show Room Number on POS and New Prompt Parameter for POS Command HOTELCHARGE2ROOM | 31 |
| Tape Chart: Balance Indication | 31 |
| LS KDS | 31 |
| Kitchen Service Utility: New Option | 31 |
| Staff Management | 32 |
| Rostering Enhancements | 32 |
| Staff Management Break Setup | 32 |
| Improved Integration With Standard Employee Card | 32 |
| POS Commands | 32 |
| Other | 33 |
| LS Central Help | 33 |
| Fixed Issues | 33 |
| Retail | 33 |
| General | 33 |
| Variant Lookup Shown for Item With no Variant Framework Setup | 33 |
| Cannot Add Customer to a Sale on POS | 33 |
| Item Distribution Is not Working | 33 |
| BackOffice | 33 |
| LSCUpgrade.UpgradeRetailImage Fails | 33 |

| | |
|--|-----------|
| Table 27 Update Preactions Created When Statement Is Posted | 33 |
| Fashion: Variant Creation With Item Import Journal | 33 |
| LS Central POS | 34 |
| Configurations for Scale Text not Used When "Qty and Price in Descr" Is True | 34 |
| Replenishment | 34 |
| Replenishment Calculation Type Filter Issue for Like-for-Like Items | 34 |
| LS Central 19.1 Release Notes | 35 |
| About This Release | 35 |
| LS Central 19.1 | 35 |
| LS Central AL code | 35 |
| LS Central extension | 35 |
| New or Enhanced Features | 36 |
| Retail | 36 |
| General | 36 |
| Improvements on the POS EFT Card | 36 |
| LoadFields in POS DataSet Utility | 36 |
| BackOffice | 36 |
| Creating and Posting Customer Orders With Decimals in Quantity | 36 |
| Option Added to Select Line on Customer Order Cancellation Web Service | 36 |
| LS Hardware Station | 36 |
| Print QR Code as Bitmap | 36 |
| Replenishment | 37 |
| LS Central Demo Role Center - Replenishment Menu | 37 |
| Hospitality | 37 |
| LS Activity | 37 |
| LS Activity Enhancements | 37 |
| Validating Guest Membership on POS | 37 |
| LS Hotels | 37 |
| Hotel Enhancements | 37 |

| | |
|--|-----------|
| LS Retail Apps | 38 |
| LS Central AppShell | 38 |
| LS Central AppShell for Windows version 3.0 | 38 |
| POS Commands | 38 |
| Other | 38 |
| LS Central Help | 38 |
| LS Central Demo Data Company | 38 |
| Fixed Issues | 39 |
| Retail | 39 |
| General | 39 |
| EFT Slips Embedded With Void Transaction Receipt | 39 |
| Error in Debug Log Fixed | 39 |
| Fields With Obsolete State "Pending" Are not Replicated | 39 |
| MaxLines Parameter Added to Web Service | 39 |
| Package not Created for Scheduler Job Using "Transfer Field List Exists" | 39 |
| Public Access to CalcPrices() Procedure | 39 |
| Tag Function in LS Central Upgrade Codeunit | 39 |
| Update 18.4 to 19.1 not Working | 39 |
| BackOffice | 40 |
| Fashion: Variant Dimension Extension Update | 40 |
| LS Central POS | 40 |
| Customer Discounts not Working on POS | 40 |
| Error in Line Discount When Doing Refund | 40 |
| Replenishment | 40 |
| Inventory Calculation in Replenishment Journal | 40 |
| Item Store Records Creation With Variant Framework Code Over 10 Characters | 40 |
| Purchase Replenishment Journal Calculation With Warehouse Location | 40 |
| LS Central 19.0 Release Notes | 41 |
| About This Release | 41 |
| LS Central 19.0 | 41 |
| LS Central AL code | 41 |

| | |
|--|-----------|
| LS Central extension | 41 |
| Important Notice! | 42 |
| Scope attribute [Scope('OnPrem')] replaced with Access Property Access = Internal | 42 |
| “Using Access Modifiers in AL | 42 |
| New or Enhanced Features | 42 |
| Retail | 42 |
| General | 42 |
| Fields Added to the POS Interface Profile | 42 |
| OnPrem Scope Removed in Codeunit 10014600 LSC Franc. - Process Inb. Ms | 42 |
| New integration event for Table Management | 43 |
| BackOffice | 43 |
| eCommerce Cross Border VAT Calculation for Sales Orders | 43 |
| Suppress Search Indexing Building | 43 |
| Sourcing Location Added to eCommerce Order | 43 |
| Improvements in Statement Auto Calculation for Midnight Setup | 43 |
| Replenishment | 44 |
| Improved Excel Import and Export Functionality for Retail Budgets | 44 |
| Hospitality | 44 |
| General | 44 |
| Changes in Activity Reservation for Dining Reservation on Validation | 44 |
| Other | 44 |
| LS Central Help | 44 |
| Fixed Issues | 45 |
| Retail | 45 |
| General | 45 |
| Web Replication Run By Scheduler Instead of Background Session | 45 |
| No Rollback If Posting a Sales Order Fails | 45 |
| LS Central POS | 45 |

| | |
|---|-----------|
| POS Close Contains Tenant in the URL | 45 |
| Replenishment | 45 |
| Purchase Replen. Journal and Transfer Replen. Journal | 45 |
| Hospitality | 45 |
| Allocation of large groups to tables caused Allocation panel error | 45 |
| Automatic allocation status change to Late and No-Show created table locking | 45 |
| Incorrect parent line numbers in delivery order recall | 46 |
| Information fields in Activity Reservation updated | 46 |

This page is intentionally left blank to ensure new chapters start on right (odd number) pages.

LS Central 19.5 Release Notes

About This Release

Released - April 28, 2022

This version is built on Microsoft Dynamics 365 Business Central 2021, release wave 2, cumulative update 5, build 19.5.36567.36700.

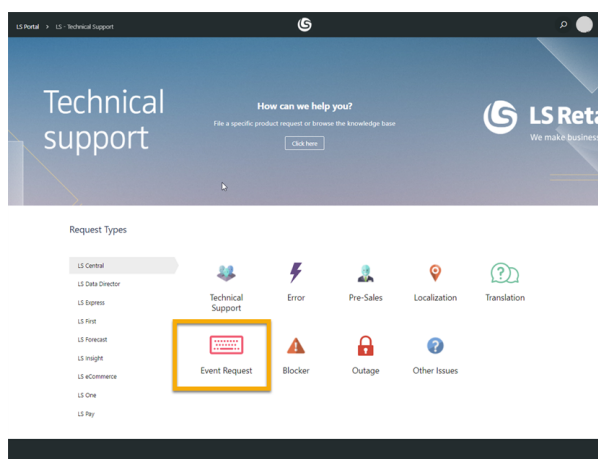
LS Central 19.5

LS Central is now delivered as two apps. Some code has been moved from the LS Central app to a new app named **LS Central System App**. The LS Central app has a dependency on the LS Central System App. The code that was moved to the LS Central System App is a code that was originally in the Toolbox .dll and is related to the POS UI. The code in the Toolbox .dll was not public, and partners could not modify the code. The code in the LS Central System app will not be public and the LS Central System App will only be published as runtime package. The LS Central System App will, in the future, hold code related to licensing to enable LS Retail to license LS Central components in the cloud.

LS Central AL code

The source code for the LS Central app is delivered in AL files that can be modified by partners. It is, however, highly recommended to make all modifications in extensions, and if you need to alter the LS Central or Business Central behavior then do that by subscribing to events.

It is LS Retail's priority to make it easy for the partners to extend LS Central. Therefore, a special section in our Support Portal (login required) is provided for partners to submit requests for new events. These requests are given priority.



LS Central extension

The release package includes LS Central and LS Central System App as runtime apps that can be installed as extensions. To install the extensions, you first need to publish them, see [Publishing and Installing an Extension v2.0](#). Once the LS Central and LS Central System App

extensions have been published, the LS Central and LS Central System App extensions can be installed using the **Extension Management** page in Business Central.

Important Notices!

Important fix for users of EFT (LS Pay module) in Android AppShell

An important fix has been made for LS AppShell Android LS Pay module and a new release of the AppShell Android has been issued, version 2022.3.

When a user paid with a card through the EFT connection of Android AppShell and the card was subsequently rejected, the transaction was completed as paid in LS Central.

This bug was valid for AppShell Android and LS Central versions 19.1-19.3, but not in older versions of LS Central or in version 19.4 and newer.

The latest version of Android AppShell has a fix for this bug and Android AppShell users are strongly encouraged to upgrade to the latest version. The functionality in LS Central 19.4 and newer now also addresses the issue when LS Central is opened in older versions of Android AppShell.

OAuth web service authentication

As documented by Microsoft, **OAuth2** will be the authentication option for Business Central SaaS and Basic authentication will be deprecated, see [here](#):

Changes in 2022 release wave 1 (version 20.0)

Web Service Access Keys (Basic Auth) for Business Central Online

The following feature will be Removed with Business Central 2022 release wave 1.

| Removed or Replaced? | Why? |
|-----------------------|---|
| Removed (online only) | The capability to access web services in Business Central using Web Service Access Key (Basic Auth) is deprecated for SaaS. OAuth2 will be the authentication option for SaaS. OAuth samples are published in the BCTech report . For more information, see Using OAuth to Authorize Business Central Web Services (OData and SOAP) . For on-premises, Web Service Access Key (Basic Auth) will remain an option for the time being. This change has no impact on how Business Central connects to external services. |

The Basic authentication feature is turned off in version 20 for new environments in SaaS. Upgraded environments can still use Basic auth in version 20, but the feature will be turned off in version 21.

LS Central version 19.5 supports the use of Service2Service OAuth2 authentication when using LS Central as a web service client, for example when POS (web service client) is calling web services on Head Office (web service server).

New or Enhanced Features

Actionable Insights

Transform Data into Insights and Actions

Actionable Insights is officially released in this version of LS Central. This is a business intelligence solution that collects large amount of data from various sources within LS Central, and then periodically runs them through an analytical calculation functionality so that it can present the essential business information to you with the **Action Hub**. The Action Hub provides insights into the patterns that are essential to your retail operation, and informs you proactively about exceptional situations so that you can take timely action.

Training material and product marketing material is not yet available at the time of release, but will be provided in the coming weeks.

Actionable Insights Base Pack

Actionable Insights comes with a KPI (Key Performance Indicator) hierarchy for you to define which KPIs should be monitored. The **Actionable Insights Base Pack** is provided free of charge, it consists of 48 KPIs for you to choose from, available in the themes of *Budgets, Inventory, Replenishment, Forecast, Vendors, Purchases, Transfers, and Sales*. Some of the KPIs offered are: *Purchase Orders with Overdue Receipt Date* and *Current Out-of-Stock Situations*.

If you are an LS Retail's partner, you can easily build your own business extension packs to provide KPIs for different verticals and industries.

KPI Calculation Workflow

There are various rules available for you to define when and how a KPI should be measured, and which team will be responsible for resolving the exceptions raised:

- **Calculation Rules** - You can set up the Calculation Rules to define when a KPI should be calculated, this will produce **signals** which hold the status of the KPI on a specific date. It is also possible to have the signals calculated based on a specific dimension only (for example, for a specific location).
- **Alert Rules** - You specify when a KPI value is outside the expected range with the Alert Rules. An **alert** will be raised, whenever a signal holds a value that exceeds the defined threshold.
- **Notification Rules** - Using the Notification Rules, you can define if a **notification** should be created for each alert raised, and to which user or user group the notifications should be assigned to. The notifications will appear in the Action Hub dashboard for the respective teams to work on.

Action Hub: Manage Information in One Central Place

The **Action Hub** dashboard consists of groups of cues and tiles that show the notifications that have been assigned to you or your group. From here, you can easily find information about the exceptions raised,

work on them, and then resolve them. The dashboard also comes with various charts which give you a graphical overview of the alerts and notifications raised over time, as well as information such as how responsive are the teams in resolving the notifications.

The Action Hub is also available in **LS Insight**, offering various KPI and report pages to help you gain an overview of your KPIs and your company's health.

For more information see [Actionable Insights](#) in the LS Central Help.

BackOffice

Add Shipment Number to Shipment Webhook Requests

Shipment number was added to shipment webhook requests.

Archiving Functionality for LSC POS Card Print Text Table 990089543

It is now possible to archive and restore LSC POS Card Print Text table records.

.Net XML and Network Credentials Assemblies Removed

XML .Net has been removed from LS Central. The system now uses an HTTP wrapper that will allow use of the OAuth standard in the future.

New Key Added to Member Sales Entry Table

A new key, *Member Card No.*, has been added to the **Member Sales Entry** table.

Option Added in the Pre-action Table

An option has been added to either keep or delete manually created records in the Pre-action table when default data is inserted.

SPG: Log Security Check Response

When a check is made to determine if a security check should be performed, the request and response is now logged.

SPG: Order Check

Web Service *SPGOrderCheck* returns if a basket is fully paid, if a check should be made, and how many items should then be checked. If a basket should be checked, item lines are returned as part of the response message. It is configurable to always return item lines.

Web Service Authentication Methods

There is now an option to select a web service authentication method on the **Web Service Setup** page and on the **Distribution Location Card**.

The default authentication method is Windows. When connecting to LS Central in SaaS, you need to use authentication S2S (Service-to-Service), for example S2S authentication method must be used when onPremise POS is connected to Head Office in SaaS.

For more information see [S2S Authentication](#) in the LS Central Help.

Food and Beverages (F&B)

Self-Service Kiosk

An improved Self-Service Kiosk has been introduced for easier, simpler, and faster serving of customers.

Adding a Self-Service Kiosk to quick service restaurants lets customers quickly and effortlessly create an order, modify their items, and finalize with a payment. When the order is paid, it is sent instantly to the kitchen where it is prepared for the customer. The order can be for one or more sales types, such as Eat-in and Takeaway.

Adding a Single Item to Cart

You can now select an item from a menu, including quantity and modifiers, and add the item to the cart. A cart summary is displayed in the app's right sidebar of the app and at checkout.

QR Codes for Dining Tables

QR Codes for dining tables can now be exported to a specified folder.

LS Activity

Banquet Event Order (BEO) Management

Banquet Event Order (BEO) Reporting is a new functionality in LS Activity. When managing Event bookings, it is now possible to group the activities and charges within a reservation by using **Event Categories**.

This grouping is then used to calculate subtotals to produce a **BEO**.

You can view the BEO in a new BEO page, which also shows versions of the BEO and the difference between BEO versions.

The BEO process also supports assigning responsibilities on each event category. The user can set up templates for which persons are normally responsible for each event category, which are then populated when an event reservation is created. The user can adjust the responsibilities on each reservation, that is either add or remove persons and track all communication related to the reservation.

Activity Group Card Simplified

The **Activity Group Card** has been modified to use *Promoted* and *Additional settings* on the fields, and thus supports the standard "Show more" or "Show less" standard field presentation settings on the card.

Booking Activities Prevented Outside Staying Period

The **Reservation Type** settings now support the possibility to set the restriction that any activities confirmed within a reservation must be within the date scope of the related Activity Reservation.

Default TODAY in Activity Group Reservation Line

When entering a new activity group line without setting a date, the value TODAY is automatically assigned to the line.

Manual Price Change on Activity Line on POS

In prior versions, the POS user could not change the unit price of the activity product or of additional charges during the payment process. This is now supported, provided the activity product is set to allow manual pricing adjustment.

- Package prices cannot be changed manually on the POS, nor individual lines that are part of the package price.
- Additional charges on activity can be changed, if they are not part of a package offer.
- Paying a group reservation on the POS does not allow changing the price on the POS. That is only possible when paying a regular reservation.

LS Hotels

Invoice Management: Deposit Line Enhancement

When a deposit has been added to an invoice, it turns bold and blue. When the deposit has been paid or an invoice has been posted, the deposit turns bold, green, and is not editable.

New "Reserve Room" Functionality in LS Hotels Web API

Three new web methods that reserve a room type for a short time while a guest is reserving a room on a hotel web site (entering payment/guest info):

- RoomTypeReserve()
- RoomTypeReserveGet()
- RoomTypeReserveDelete()

Hotel Setup has two new fields that are displayed in the Web Settings FastTab:

- **No. of minutes reserved** - Number of minutes that room types are reserved.
Reserving a room affects the room availability so the room types must be released (run job). An option has been added to job management CU to clean unused reserved room types. This was needed to release the unused reserved room types.
- **Room Type Block** is a new table that stores this data.
A new page, **Room Type Block**, lets you view the data coming

from the web service. The **Blocked Rooms** column in the **Hotel Availability** page includes the reserved room types.

LS Recommend

Improved LS Recommend, a Cloud-Based Recommendation Engine

A new version of LS Recommend is officially released in this version of LS Central. LS Recommend is a solution in LS Retail's Intelligent Cloud Suite that helps you with product recommendation. Based on the transactional sales history and setup data uploaded from LS Central, the LS Recommend engine learns the sales patterns to create a recommendation model, which will provide product recommendation in return. These recommendations are consumed by LS Central and LS Commerce, and can be displayed on POS terminals, mobile devices, and eCommerce sites.

Use the POS command RECOMMEND to get product recommendation from LS Recommend via the POS terminals. The recommendation is based on items that are likely to be sold together with the item(s) currently in the shopping basket.

The previous version of LS Recommend has been obsoleted since it did not support Business Central on SaaS due to dependency on DLLs.

Training material and product marketing material is not yet available at the time of release, but will be provided in the coming weeks.

For more information see [LS Recommend](#) in the LS Central Help.

LS Staff Management

Exchange Shifts Between Different Locations

An employee can now request a shift exchange in a different location and that can be accepted by the manager.

POS Commands

The following POS command is new in LS Central 19.5:

- **CO_PREPAYMENT** - Customer Order prepayment, to pay now or later when a new CO is created and before being posted.

See the [LS Central Help](#) and the corresponding [Excel](#) list with filters for a complete list of POS commands.

Other

LS Central Help

Help is now available for [Actionable Insights](#), [LS Recommend](#), and [LS Hotels](#).

Fixed Issues

BackOffice

Customer Order Fixes

Incorrect Payment

Code has been added to insert the correct amount into the Customer Order payment line.

Input Window Locks

Close and resume POS sales after selecting a customer has been canceled.

Modifications After Pressing Total or Cancel Order

- Users can now add or remove Customer Order lines in a transaction after pressing the **Total** button on the POS.
- Users cannot add new Item lines when canceling Customer Orders on the POS. Now they must finalize the current transaction and start a new one.

Permission Sales Shipment Header

Permission error on the **Sales Shipment Header** and **Sales Shipment Line** tables, when picking and shipping a Customer Order on the POS, has been fixed.

Error When Upgrading from Version 19 to 19.3

In the *UpgradeSalesTypeRetailImageLink* method, the insertion is now controlled, meaning that an error is not issued if the record already exists.

Insert not Counted Action Improved

The **Insert not Counted** action in **Store Inventory Worksheets** has been fixed to handle variants.

Printing of Posted Safe Transfer

Printing of Posted Safe Transfer (without a SafeMgtSetup) has been fixed.

Scheduler Time Slot Does not Work as Intended

Obsolete code for Scheduler Time Slots has been removed.

Unable to Identify Store ID When Using Sourcing Location

In Sales Orders generated from Customer Orders, Store and Location do not have to be linked together through the **Store Card**.

Food and Beverages (F&B)

Cash & Safe Management

The behavior of Cash & Safe Management in F&B has been reviewed and fixed as needed. Instead of showing a panel with the tender operations, a pop-up menu is now displayed when you press the TD_OFFLINE command button. The menu is the #SAF-OFFLINEMENU and exists already as part of demo data. An upgrade removes the POST POS command from the line with the LOGOFF command. If start of day float operation is needed, the FLOAT_ENT command is run automatically.

LS Activity

Email Script Error

A bug, which could cause an error when emailing Activity confirmations if the subject text was too long, has been fixed.

Replenishment

Replenishment Data Profile Assigned to Item Category

When the Replen. Data Profile was assigned to an Item Category, items belonging to the Item Category and having Replenishment Calculation Type set to *Automatic - From Data Profile* did not get assigned with the Data Profile. This has now been fixed.

This page is intentionally left blank to ensure new chapters start on right (odd number) pages.

LS Central 19.4 Release Notes

About This Release

Released - March 17, 2022

This version is built on Microsoft Dynamics 365 Business Central 2021, release wave 2, cumulative update 4, build 19.4.35398.35482.

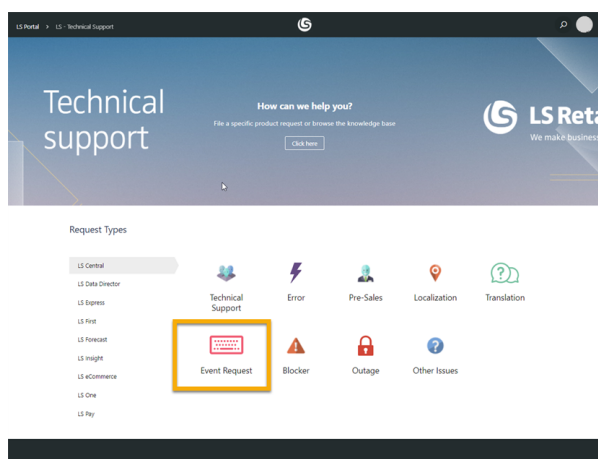
LS Central 19.4

LS Central is now delivered as two apps. Some code has been moved from the LS Central app to a new app named **LS Central System App**. The LS Central app has a dependency on the LS Central System App. The code that was moved to the LS Central System App is a code that was originally in the Toolbox .dll and is related to the POS UI. The code in the Toolbox .dll was not public, and partners could not modify the code. The code in the LS Central System app will not be public and the LS Central System App will only be published as runtime package. The LS Central System App will, in the future, hold code related to licensing to enable LS Retail to license LS Central components in the cloud.

LS Central AL code

The source code for the LS Central app is delivered in AL files that can be modified by partners. It is, however, highly recommended to make all modifications in extensions, and if you need to alter the LS Central or Business Central behavior then do that by subscribing to events.

It is LS Retail's priority to make it easy for the partners to extend LS Central. Therefore, a special section in our Support Portal (login required) is provided for partners to submit requests for new events. These requests are given priority.



LS Central extension

The release package includes LS Central and LS Central System App as runtime apps that can be installed as extensions. To install the extensions, you first need to publish them, see [Publishing and Installing an Extension v2.0](#). Once the LS Central and LS Central System App

extensions have been published, the LS Central and LS Central System App extensions can be installed using the **Extension Management** page in Business Central.

Important Notice!

Important fix for users of EFT (LS Pay module) in Android AppShell

An important fix has been made for LS AppShell Android LS Pay module and a new release of the AppShell Android has been issued, version 2022.3.

When a user paid with a card through the EFT connection of Android AppShell and the card was subsequently rejected, the transaction was completed as paid in LS Central.

This bug was valid for AppShell Android and LS Central versions 19.1-19.3, but not in older versions of LS Central.

The latest version of Android AppShell has a fix for this bug and Android AppShell users are strongly encouraged to upgrade to the latest version. The functionality in LS Central 19.4 now also addresses the issue when LS Central is opened in older versions of Android AppShell.

New or Enhanced Features

Retail BackOffice

Customer Information Updated via POS

It is now possible to update a customer's email, phone number, and mobile phone number via the POS using the POS command CUSTUPDATE.

Customer Order Sourced from Vendor

A new event, *OnSourcingLocationCollect*, in codeunit *COSourcingLocationListV2Utils* has been implemented to allow intervention so that all Customer Orders are sourced from vendors and not based on inventory in Sourcing Locations.

Fashion: Obsolete Procedures in Codeunit LSC Item Variants Functions

The following procedures in codeunit *LSC Item Variants Functions* (10001405) are no longer in use and have been set to obsolete:

- ReturnHeaderDimension
- ReturnCompareValue
- RegisterManualFramework
- InsertItemVariantRegistration
- RegisterCodeByGroup

LS Central Code Refactored to Use New BC Email Functions Instead of SMTP Codeunit

In Business Central, an SMTP codeunit has been replaced by a new email module. The LS Central code has been refactored by switching to the new email module.

LS Central POS

Mgr: Yes/No Tag in POS Status Bar

The MGRKEY context value was not being updated in all scenarios, although the Manager Key status was correct in the POS logic. This has now been corrected.

Hospitality

Delivery and Takeout Constants Moved from Hospitality Setup to Store Level

The Sales type handling in the F&B takeout panel has been changed. The takeaway sales type is set for each F&B POS terminal and the restaurant determines whether to use the F&B Order Structure for takeaway.

Each store can have multiple sales types for F&B takeaway and in the future for delivery. The Hospitality Type has a new Service Type, *F&B Takeaway in Restaurant*.

LS Activity

API: Ticket Admission Control

The LS Activity web APIs now include calls and respond to verify if a ticket barcode is a valid access. They can also issue an attendance entry log.

Cancellation Policy on Member/Client and Customer Level

Advanced setup has been implemented for assigning and removing cancellation policy depending on factors like which client, related customer account, and booking period. This provides more flexibility for the organization to react with stricter or more relaxed policies, depending on economy and other external variables.

Matrix Resource Image and Tooltip

Visual presentation in matrices has been enhanced by supporting images for resources and including tooltips for resource details, that is capabilities and specific day comments.

New Copy Feature in Activities

The **Activity Reservation** card has a new copy feature. The copy function copies activities, comments, and additional charges from an existing reservation to a new one, while recalculating prices and adjusting dates. This functionality is best utilized in event bookings, when the user might want to create "template" reservations to be used to speed up the entry process of complex event bookings.

POS Command CHECKACCESS Updated

The CHECKACCESS POS command has been extended to include validation of ticket barcodes. The validation confirms if access is valid at the given date and issues an attendance entry log.

Special Characters in Matrix Hover Text

In prior versions the "%" character was used internally to identify parameters to be used in the script, and therefore it was not possible to use this character in email body text. This character has now been replaced internally with a less commonly used character.

LS Hotels

Group Support in Hotels Web Service

The Web methods *ReservationCreate* and *ReservationUpdate* now support external group numbers that are used to create hotel reservation groups. So now when reservations are created via web service the reservations can be grouped together.

New Method to Add Items to Reservation Extra

New web methods have been added to save data in Reservation Extra (additional reservation table):

- ReservationExtraSave
- ReservationExtraGet
- ReservationExtraDelete

LS KDS

Rush Recalled Orders

When an order has been recalled to the expeditor display, you can mark it as rushed and the rush user interface styling will be applied.

Fixed Issues

Retail

BackOffice

Distribution Location Web Override Credential

Priority is now given to the web credential in Distribution Location. Distribution location web override credential is working, even if web override credential is *true* on web service setup.

Mix & Match Calculation

A condition expression has been updated to apply the correct Deal price.

LS Central POS

Changing Price and Qty for a Scale Item

When an item has been weighed using a scale, the user cannot change the item's price or quantity value. If the POS is connected to a scale but the weight information is still entered manually, the user can now change the price and quantity for that item.

Replenishment

Vendor No. Selection in Replenishment Calculation

An issue where the wrong vendor number is selected during the Replenishment Journal calculation when there is an Item Store Record set up with a blank Location Code, has now been fixed.

This page is intentionally left blank to ensure new chapters start on right (odd number) pages.

LS Central 19.3 Release Notes

About This Release

Released - February 17, 2022

This version is built on Microsoft Dynamics 365 Business Central 2021, release wave 2, cumulative update 3, build 19.3.34541.35002.

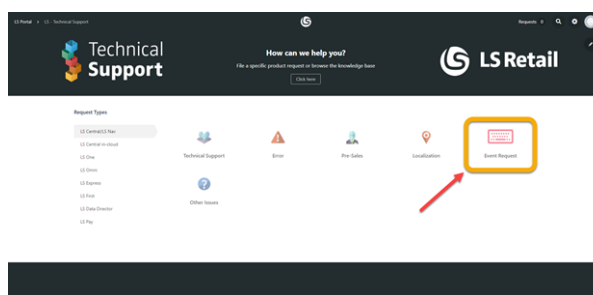
LS Central 19.3

LS Central is now delivered as two apps. Some code has been moved from the LS Central app to a new app named **LS Central System App**. The LS Central app has a dependency on the LS Central System App. The code that was moved to the LS Central System App is a code that was originally in the Toolbox .dll and is related to the POS UI. The code in the Toolbox .dll was not public, and partners could not modify the code. The code in the LS Central System app will not be public and the LS Central System App will only be published as runtime package. The LS Central System App will, in the future, hold code related to licensing to enable LS Retail to license LS Central components in the cloud.

LS Central AL code

The source code for the LS Central app is delivered in AL files that can be modified by partners. It is, however, highly recommended to make all modifications in extensions, and if you need to alter the LS Central or Business Central behavior then do that by subscribing to events.

It is LS Retail's priority to make it easy for the partners to extend LS Central. Therefore, a special section in our Support Portal (login required) is provided for partners to submit requests for new events. These requests are given priority.



LS Central extension

The release package includes LS Central and LS Central System App as runtime apps that can be installed as extensions. To install the extensions, you first need to publish them, see [Publishing and Installing an Extension v2.0](#). Once the LS Central and LS Central System App extensions have been published, the LS Central and LS Central System App extensions can be installed using the **Extension Management** page in Business Central.

New or Enhanced Features

Retail

BackOffice

Mix & Match: New Discount Setup Possibilities

- A new field, **Deal Split Qty.** on the **Benefits** FastTab, is only displayed when **Discount Type** is of type *Line spec*.
- A new column, **Split Deal Price/Disc. %** on the **Lines** FastTab, is only displayed when the new **Deal Split Qty.** is populated.
- Use these fields to set up a discount where there is a deal price/disc % for when the Item quantity is less than **Deal Split Qty.** and a deal/price for when the item quantity is bigger.

New Web Service

A new web service, *LSCMemberAuthenticatorLogin*, creates an account based on the information from the 3rd-party account service. The web service takes email, Account ID, and Authenticator in as parameters and returns the Member Account number.

The Account ID and the Account Service Provider are stored in LS Central and linked to the Member Account. The Account ID is stored in a scramble format (not readable by LS Central users).

This web service can also be used to log in a Member Account. The service takes in the Account ID and Authenticator and returns the Member Account name.

Redesigned Role Centers

Role centers Store Manager, Retail Buyer, Fashion Manager, Store Associate, and Retail Store Manager Tablet have been redesigned and now have horizontally arranged tiles and sections.

The Store Manager role center has now a list of active promotions and periodic discounts.

LS Central POS

Double-sided Printing Implemented

Functions *ChangePrintSide* and *SetPrintSide* have been added to the POS Print Utility to enable users to switch to backside printing on printers with that type of support.

Hospitality

Attributes in a New POS Panel and Linking Special Requests to Attributes

Attributes can be used as dining preferences requested by the customers or members. They are set in a new POS panel, **Attribute Entries**, and can be registered and edited at certain times in the dining service:

1. For the dining reservation in the **Dining Allocation** panel.
2. For the dining table after guests have been seated.
3. For the transaction in the Sales POS.

Activity Comments and Special Requests for dining reservations are in sync. By linking the Special Requests to a dining preference attribute, it is possible to view and edit them with the other dining preference attributes.

New FAB Takeout Panel on POS

The Food and Beverage (FAB) takeaway process is handled within the **FAB Takeout** panel:

- It is an #OFFLINE panel specifically structured around the FAB takeaway process.
- It belongs to an interface profile that has POS startup controller #FAB-TAKEOUT-PANEL.
- It displays a list of the restaurant's FAB orders that are either created within the POS terminals running the controller #FAB-TAKEOUT-PANEL or are sent through eCommerce. These orders are either paid at order time or will be paid at pickup.
- From here you can create new FAB orders and enter the customer's details and pickup time.
- From here you take payment for FAB orders, finalize orders when the customer comes for pickup, or mark the orders as a no-show.

In the demo data, Store S0017 and POS P0119 have been set up to use the FAB takeaway process.

LS Activity

Edit Resource Availability and Schedule

On the **Activity Resource Card**, the user can edit the resource availability and schedule by using the **Assist Edit** button in the **Default Quantity** field. Editing is only allowed, if the resource availability is based on scheduled quantities.

LS Hotels

Confirm Activities in a Reservation When Adding a Guest

A new setup has been added to the hotel reservation type **Activity Confirmation**. If there are any activities with status *Draft* when you close the **Reservation** card, the system automatically tries to confirm the activity reservation or asks the user for confirmation. With the new setting on and depending on the setup, the user cannot close the **Reservation** card without confirming activities. **Note:** This is only executed if the hotel reservation is either confirmed or has inhouse internal status.

Detailed Revenue Entry Table: Improved Sorting

The Detailed Revenue Entry table is now sorted by reservation number and is attached to line numbers instead of entry numbers, so order lines now appear in a logical manner.

Hotel Invoice Management With Open Sales Invoice or Open POS Transaction

When a Sales Invoice and/or Transaction in POS (SI/TR) is created for lines in Hotel Invoice Management (Detailed Revenue Entry - DRE), these lines become non-editable in Hotel Invoice Management.

- If there is unposted SI/TR, the DRE cannot be changed.
- Changing a line in SI/TR changes the appropriate DRE line.
- Deleting/voiding a line in SI/TR releases the DRE line for editing.
- Delete SI or TR and the related lines in DRE are released for editing.

New color for DRE lines in Hotel Invoice Management:

- Original lines - standard color
- Unposted SI or TR - strong accent color - blue and bold. This is new.
- Posted SI or TR - favorable color - green and bold.

New Tile Showing Hotel Reservations With Draft Activities

A new tile, **Draft Activities**, has been added in the Role Center's **Attention Required** section. The tile shows all reservations with *Draft* activities. The time span is that **Arrival Date** is within 90 days from the current date.

Rate Attribute Unit Prices

Rate attribute unit prices can now be modified when a new daily room rate configuration is created. A new rate attribute log has also been added, where you can see all previous changes on the rate attribute unit price.

POS Commands

The following POS commands are new in LS Central 19.3:

| | |
|----------------------|---|
| ATTR_SHOW_DINRESERV | Show attributes for the selected dining reservation |
| ATTR_SHOW_DINTABLE | Show attributes for the selected dining table |
| ATTR_SHOW_POSTRANS | Show attributes for the selected POS transaction |
| CHECKALLOWANCE | Lets POS operator check various allowance issues |
| FAB-CHANGEORDERTIME | Takeout contact information: Change order date and time |
| FAB-CONTACTCOMMENT | Takeout: Contact Comment panel |
| FAB-CONTACTINFO-OPEN | Takeout: Open Contact Information panel |
| FAB-EDITCOMMENT | Takeout contact information: Edit comment |
| FAB-FINALIZE | Takeout: Finalize order |
| FAB-NEWORDER | Takeout: Create new order |
| FAB-NOSHOW | Takeout: No-show order |
| FAB-OPENORDER | Takeout: Open order |
| FAB-ORDER-FILTER | Takeout: FAB order filter |
| FAB-SHOWCOMMENT | Takeout contact information: Show comment |
| REFUNDALLOWANCE | Asks the POS operator for the Allowance Number based on pre-sold allowances, and issues refund journal lines based on the outstanding balance of the allowance. |
| SHOW_CONTINFO_PANEL | Takeout: Show Contact Information panel |
| SHOW_TAKEOUT_PANEL | Takeout: Show Takeout panel |

See "POS Commands" in the [LS Central Help](#) and the corresponding [Excel](#) list with filters for a complete list of POS commands.

Other

LS Central Demo Data Company

A new POS layout intended for self-service has been added to the LS Central Demo Data Company. The POS profiles are named #SELFCHECK and they are set for terminal **P0078**. **Note:** For demo purposes the #POS panel has buttons to log off and void the transaction.

LS Central Help

A new filter, **Hotfixes**, has been added to the top search bar. The filter limits search results exclusively to content related to hotfixes.

Fixed Issues

Retail

General

Check Function Added in Customer Orders

A check function has been added for when a Customer Order is created in a store with a **Web Store Customer Number**. If the **Web Store Customer Number** is empty, an error will occur when the system tries to create the Customer Order.

Upgrade Error from Version 18.4 to 19.x

An error in procedure *ItemOnBeforeModifyEvent* that occurred when upgrading to version 19.x has been fixed.

Use Full Remaining Balance, POS Data Entry Type

If the **Use Full Remaining Balance** check box is selected on the **POS Data Entry Types** card, when a gift card or a voucher using Data Entry is being used as a payment, the full remaining amount will now be used and a refund made if the transaction is overpaid.

This issue has been addressed in hotfixes 19.0.18.0, 19.1.14.0, and 19.2.1.0.

BackOffice

Fashion: Rename of Variants for Items with Variant Framework

When renaming an Item Variant, the Item Variant Registration table will now be updated correctly. This resolves an issue where an Item Variant is renamed and Variant Worksheet did not get updated.

Requesting Access to LS Central Internal Code for SaaS

Procedure *PrintKDSHeader* in the POS Print Utility is now external for extension availability.

LS Central POS

Functionality Profile: Logoff Function

The Logoff Function configuration has been removed from the Functionality profile as it was not being used anymore.

Replenishment

Transfer Order Creation in Purchase Replenishment Journal with Cross Docking

When creating Transfer Orders from the Purchase Replenishment Journal with the Cross Docking option, an error that occurred related to a conflicting Line No. in the Transfer Line table, has now been fixed.

Vendor Performance Line Update

When a Purchase Order is being posted, the Vendor Performance Line will now be updated based on the Order Line No. from the Purchase Receipt Line and the Purchase Invoice Line. This resolves an issue where the Vendor Performance Lines were occasionally being updated with an incorrect actual value.

This page is intentionally left blank to ensure new chapters start on right (odd number) pages.

LS Central 19.2 Release Notes

About This Release

Released - January 27, 2022

This version is built on Microsoft Dynamics 365 Business Central 2021, release wave 2, cumulative update 2, build 19.2.32968.33504.

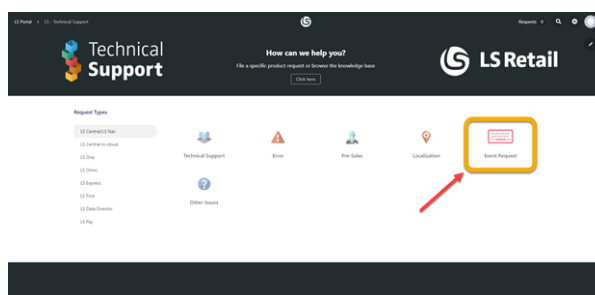
LS Central 19.2

LS Central is now delivered as two apps. Some code has been moved from the LS Central app to a new app named **LS Central System App**. The LS Central app has a dependency on the LS Central System App. The code that was moved to the LS Central System App is a code that was originally in the Toolbox .dll and is related to the POS UI. The code in the Toolbox .dll was not public, and partners could not modify the code. The code in the LS Central System app will not be public and the LS Central System App will only be published as runtime package. The LS Central System App will, in the future, hold code related to licensing to enable LS Retail to license LS Central components in the cloud.

LS Central AL code

The source code for the LS Central app is delivered in AL files that can be modified by partners. It is, however, highly recommended to make all modifications in extensions, and if you need to alter the LS Central or Business Central behavior then do that by subscribing to events.

It is LS Retail's priority to make it easy for the partners to extend LS Central. Therefore, a special section in our Support Portal (login required) is provided for partners to submit requests for new events. These requests are given priority.



LS Central extension

The release package includes LS Central and LS Central System App as runtime apps that can be installed as extensions. To install the extensions, you first need to publish them, see [Publishing and Installing an Extension v2.0](#). Once the LS Central and LS Central System App extensions have been published, the LS Central and LS Central System App extensions can be installed using the **Extension Management** page in Business Central.

New or Enhanced Features

Retail

General

AutoTest and EFT: CreateTenderTypeCard Added and Other Changes

Changes have been made to the EFT Utility for AutoTests and AutoTests were added for EFT and Card Payments in POS.

Download Replication Request and Packet Data

An option to download replication requests and packet data has been added. Data download gives the possibility to get web replication data from the SaaS environment.

Request for Event Publishers

New events have been requested by partner.

BackOffice

Customer Order: Shipping Agent and Package Tracking Code

Shipping agent for Customer Order shipments can now be entered on the POS or be included in a web service that creates the customer order. You can set a default shipping agent for POSs on company level or for each store. This default can be changed just before posting when shipping on a POS.

It is possible to send a message to the customer when a shipment is posted. If the Package Tracking Number is known, you can include a tracking URL in the message. A new message is sent, if the Shipping Agent information and/or the Package Tracking Number is changed for a shipment. This information can be changed either in BackOffice or on the POS.

Data Entry Type: Print Remaining Balance

After using a gift card during a transaction, the remaining amount in points on the card is now printed correctly on the Sales Slip.

Events Added Since the 19.0 Code Freeze

Events that were added after version 19.0 was released are now available through hotfix 19.0.8.0.

Refactored SPG Profiles

Enhancements have been implemented to set up the ScanPayGo app through the ScanPayGo Profile setup in Business Central.

Send Receipt by Email for POS Transactions

You can now set up an email address on the **Member Contact** page and use the **Send Receipt by Email** field to email to that address. This works with ScanPayGo transactions.

Support Data Translation for Item HTML

An interface has been added where you can define different Item HTML field values for different language codes. There is also an option to import and export the HTML fields to Excel.

If you have a Replication Sub Job where table 10001411 **LSC Item HTML** is being replicated, you need to replace it with table 10001410 **LSC Item HTML ML**.

Web Service to Send Email With Password Code for Password Reset

A web service, which the ScanPayGo app can call to trigger an email to be sent from LS Central to the email address of the ScanPayGo user, has been created. The web service has an email address as request parameter and the response is a reset code.

When the user enters the reset code and new password, the email, the new password, and the reset code are sent by the web service to LS Central. The reset code has an expiration time set to 30 minutes.

LS Central POS

Long-running Task Indicator in POS

A long-running indicator has been added to the POS. When an action takes more than three seconds, three animated dots are now shown at the top of the page. The dots are shown after three seconds, but you can adjust the time in the **POS Interface Profile**.

LS Hardware Station

Locking System for EFT in Hardware Station for Manual Session Control

The LS Pay connection in LS Hardware Station has been updated for payment plugins that use manual session control. In these cases the classic method of locking the device for each method called is used. Events that are connected to EFT locking have been updated accordingly.

Scale Certification Dialog and Command Changes

- A **Close** button has been added to the **Scale Legally Relevant (Checksums)** dialog window. It allows POSs with no keyboard to

close the window.

- The new POS command SCALE_DIALOG opens the dialog window.

Replenishment

Effective Inventory in Stock Coverage

The inventory used in the Stock Coverage calculation now includes the quantities from the Purchase, Sales, and Transfer Orders having their respective receipt or shipment date up until the day when the Stock Coverage is calculated. The **Eff. Inventory** field has been added in the **Stock Coverage** page as well as a report to show the inventory value used to calculate the actual coverage. You can specify which document types are to be excluded from the Eff. Inventory by using the settings in the **Stock Coverage and Store Capacity** FastTab, in Replenishment Setup.

For more information see "Stock Coverage" in the LS Central Help.

Store Capacity Effective Inventory Settings Moved to a New FastTab

The settings that were used to specify which document types are to be excluded from the Effective Inventory in Store Capacity have been moved from the **Effective Inventory** FastTab in Replenishment Setup, to the **Stock Coverage and Store Capacity** FastTab.

Retail Budgets: Discontinue Import of Obsolete Value Types

As announced in the LS Central 19.0 release, LS Retail only supported the import of the obsolete **Inventory Value** and **Sales Amount** budget value types via Microsoft Excel spreadsheet for Retail Sales and Purchase Budgets until LS Central version 19.1. Therefore, the following changes:

Retail Sales Budgets

LS Retail has stopped supporting the import of the **Inventory Value** budget value type in the Excel spreadsheet into the Closing Stock Value of the budget entries. Please use the **Closing Stock Value** budget value type for the import.

For more information see "How to: Work with Excel (Export/Import)" for Retail Sales Budgets in the LS Central Help.

Retail Purchase Budgets

LS Retail has stopped supporting the import of the **Sales Amount** budget value type in the Excel spreadsheet into the Purchase Amount of the budget entries. Please use the **Purchase Amount** budget value type for the import.

For more information see "How to: Work with Excel (Export/Import)" for Retail Purchase Budgets in the LS Central Help.

Hospitality

Onbefore/After RunCommand

OnBefore and OnAfter event handlers have been added in the Hospitality POS Commands codeunit.

Run SelectRes Command When Seating an Activity Reservation at a Table

When a dining table with an activity reservation is opened in the POS, the activity reservation is linked to the POS Transaction automatically and a POS Trans. Line is inserted with the activity reservation reference.

Table Management: Button for Sending Courses and Non-coursing Items to Kitchen

Coursing needs to be turned on for each hospitality type that uses coursing. The command KITCHEN_SENDDOKDS is used to send coursing menu types and items with no menu types or non-coursing menu types to the kitchen. The command behavior is controlled by a setting for each hospitality type.

The command LOGOFF can also be used to send coursing menu types and items with no menu types or non-coursing menu types to the kitchen. The command behavior is controlled by a setting for each hospitality type.

LS Activity

Activity Matrix Enhancements

A new **Copy** action has been added in the **Matrix Template Card** to make it easier to create new templates. If the **Resource Location** filter is set, only activities in that location are shown in the Matrix.

Flexible Booking Time for Activity User

A new setting has been added for an Activity user for **Booking Time Flexibility**. This sets a restriction on users on how "close" in time they are allowed to book a resource.

Setting a positive value in this field (60 min) means that the user is not allowed to book an activity, if there are less than 60 minutes to the activity taking place. Setting this field to -15 minutes means that the user can book an activity 15 minutes back in time. This can be useful, for example, if a customer comes in at 10:05, because then it is possible to book a time in the system at 10:00.

LS Hotels

Confirming Activities in a Reservation When Dates Are Changed

When the dates in a hotel reservation are changed and there are activities linked to that reservation, the system will now try to reconfirm those activities with the new dates.

Group Total in Hotel Group Reservation Card FactBox

A new line, **Group Total Charges**, has been added in the **Paymaster status** section in the **Hotel Group Reservation Card FactBox**. The line shows the total amount for all charges for all reservations in the group, regardless whether they are routed to Paymaster or to the individual reservations.

The **Total Charges** tile shows the total charges on the Paymaster for the group.

Hotel Res. List: Cancelled Reservations not Shown

If a reservation within a group reservation is cancelled, the reservation is no longer shown in the **Hotel Res. List** sub-page of the **Hotel Group Reservation** card. Instead, an overview of all cancelled reservations can be seen from a link in a FactBox in the **Paymaster Status** section.

Hotel Reservation Page: IATA No./Commission Field

A new field has been added on the **Hotel Reservation** page to store a travel agent's IATA number for the reservation.

Improved Sync Between Guest List and Reservation Children Records

Synchronization between guest list, hotel reservation children records, and activity group has been improved. For consistency, children are managed in the same way as adults in the guest list in BackOffice. Age of children has been removed from the solution; only age groups apply.

Prompt for Applying Cancellation Policy (Cancel, No Show, Early Checkout)

When a reservation is changed and cancellation policy should be applied (Cancel, No Show, or Early Checkout), the user will be prompted if these fees should be applied.

Role Budget Adjustment for Hotels

Staff Management now supports adjustment of role budgets based on statistical data derived from the hotel reservations and housekeeping. For example, you can adjust the number of reception staff depending on check-ins or check-outs, or the number of bartenders based on the occupancy rate. This information can be displayed in the **Roster Scheduling** page for reference during manual rostering.

Room Allocation List: Room Filters Added

New filters have been added to the **Room Allocation List** to enhance the room allocation experience in BackOffice.

Room Rate Change Page: Option to Apply to All Room Types

When changing the rate for a group reservation with many different room types, a new option is now available on the **Room Rate Change** page - **Apply to all room types**. If selected, the rate change will apply to all room types, if not selected, the rate change will only be applied to the selected room type.

Show Room Number on POS and New Prompt Parameter for POS Command HOTELCHARGE2ROOM

If a hotel reservation is linked to a transaction on the POS, you can now show the room number on the POS by using the POS tag *HTL-ROOM*. This is useful to show directly on the **Charge to Room** button which room the charge will go to.

There is also a new PROMPT parameter (optional) on the POS command HOTELCHARGE2ROOM, which can be set to let the POS prompt for room number even if the transaction is linked to a hotel reservation. This is useful if the transaction is linked to a room but you need to make the charge to another room.

The format of the command is:

HOTELCHARGE2ROOM <TenderType>;PROMPT

Tape Chart: Balance Indication

New icon indicators to show balance indication have been added to the **Tape Chart**, in the upper-right corner of the reservation. If there is a balance on the reservation, a bill is shown. If there is no balance, a check mark is shown. Finally, if the reservation is part of a group that is paid by paymaster, an arrow is shown to indicate that balance is moved to the group.

LS KDS

Kitchen Service Utility: New Option

A new option, the **Restaurants** filter in the Kitchen Service Utility, lets the user select which restaurants the service should get the Kitchen Order Tickets (KOTs) for. It is possible to select more than one restaurant, if they share the same kitchen. If no restaurant is set, the service will get all KOTs created in LS Central.

A restaurant will be displayed in this list, if the **Kitchen Prod. System in Use** field on the **Store Card**, the **Kitchen Printing** FastTab, is set to **Yes**.

Staff Management

Rostering Enhancements

Previously, when an employee was part of a roster list, but did not have any roster assignment, the employee was removed from the roster view at confirmation. Although the user could add the employee back to the roster view, if needed at a later stage, this was not convenient if you had temporary or replacement workers that you wanted to keep on the roster schedule view in case you needed to assign the employee later as replacement or additional worker. This has now been changed so that employees without roster assignment are not removed from the roster view at confirmation.

Also, if an employee has a fixed monthly salary, the monthly cost was previously assigned to all rosters that the employee was assigned to, but now the employee is only assigned to his or her "base" default work location.

Staff Management Break Setup

Break settings are now per shift, but if you also add a role, you can set up different breaks for each role. A blank role is the default for the whole shift.

The purpose of this is to be able to have different break times within shifts, based on the role. For example, cashiers might go to lunch at 12:00, but waiters at 13:00. Normally, this setup is only needed when using a Staff Management Schedule to provide availability for activity resources based on staff schedule.

Improved Integration With Standard Employee Card

The actions on the **Activity Resource Card** have been re-arranged to be more in line with the standard Business Central **Employee Card** layout. It is now easier to open the related BC **Employee Card** directly from the **Activity Resource Card** with the **Assist Edit** button in the **Employee** field, which is in the integration section of the page.

POS Commands

The following POS command is new in LS Central 19.2:

- **SCALE_DIALOG** - Displays information regarding the scale certification.

See "POS Commands" in the [LS Central Help](#) and the corresponding [Excel](#) list with filters for a complete list of POS commands.

Other

LS Central Help

The Hospitality part of the menu tree in LS Central Help has been updated and its structure reorganized.

Fixed Issues

Retail

General

Variant Lookup Shown for Item With no Variant Framework Setup

Previously, items with variants (but no Variant Framework) would show Variant Lookup without any values to select. Now, however, the Pop-Up Menus are used for these Items.

Cannot Add Customer to a Sale on POS

When you start a transaction at the POS and enter an item and then a customer, an error would occur. This has been fixed.

Item Distribution Is not Working

When one location was distributed to a list of locations, replication data was not cleared between locations, and therefore accumulated data was replicated to the locations. This has been fixed.

BackOffice

LSCUpgrade.UpgradeRetailImage Fails

Some Ismedia links were not formed as expected by the upgrade routines. These links are now handled like no Ismedia links.

Table 27 Update Preactions Created When Statement Is Posted

Do not create preaction for item modifications if values in fields **Cust is Adjusted** or **Allow Online Adjustment** are changing.

Fashion: Variant Creation With Item Import Journal

An issue where the **Included in Variant No.** setting in the Variant Dimension Code was not working when variants are created using the Item Import Journal, has now been fixed. From now onwards, if you have activated the **Included in Variant No.** setting for a Variant Dimension Code, creating its variants with the Item Import Journal will have the relevant Variant Value included in the Variant Code.

LS Central POS

Configurations for Scale Text not Used When "Qty and Price in Descr" Is True

When the **Qty and Price in Descr.** check box in an Interface profile is set to true and a scale item is sold, the text that is displayed in the journal is now using the **Price per unit** configurations from the Functionality profile. A new topic, "How to: Configure Price and Quantity for Scale Items", has also been added to the LS Central Help.

Replenishment

Replenishment Calculation Type Filter Issue for Like-for-Like Items

An issue in Replenishment calculation, where items assigned with the *Like for Like* calculation type are being picked up from the Replen. Stock Demand Worksheet and added to the Replenishment Journals, even though the Replen. Template has been set up to exclude items with Replenishment Calculation Type *Like for Like*, has now been fixed.

LS Central 19.1 Release Notes

About This Release

Released - December 16, 2021

This version is built on Microsoft Dynamics 365 Business Central 2021, release wave 2, cumulative update 1, build 19.1.31886.32186.

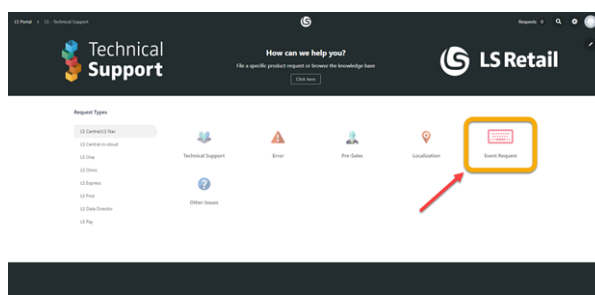
LS Central 19.1

LS Central is now delivered as two apps. Some code has been moved from the LS Central app to a new app named **LS Central System App**. The LS Central app has a dependency on the LS Central System App. The code that was moved to the LS Central System App is a code that was originally in the Toolbox .dll and is related to the POS UI. The code in the Toolbox .dll was not public, and partners could not modify the code. The code in the LS Central System app will not be public and the LS Central System App will only be published as runtime package. The LS Central System App will, in the future, hold code related to licensing to enable LS Retail to license LS Central components in the cloud.

LS Central AL code

The source code for the LS Central app is delivered in AL files that can be modified by partners. It is, however, highly recommended to make all modifications in extensions, and if you need to alter the LS Central or Business Central behavior then do that by subscribing to events.

It is LS Retail's priority to make it easy for the partners to extend LS Central. Therefore, a special section in our Support Portal is provided where partners can submit requests for new events. These requests are given priority.



LS Central extension

The release package includes LS Central and LS Central System App as runtime apps that can be installed as extensions. To install the extensions, you first need to publish them, see [Publishing and Installing an Extension v2.0](#). Once the LS Central and LS Central System App extensions have been published, the LS Central and LS Central System App extensions can be installed using the **Extension Management** page in Business Central.

New or Enhanced Features

Retail

General

Improvements on the POS EFT Card

- A new check box, **Disable Void Card Prompt**, has been added to **POS EFT Card** to prevent the POS from offering to void card payments when voiding a transaction from the Transaction Register.
- An option has been added on the **POS EFT Card** to use a 10-digit ClientTransID in EFT (and Prefix). POS EFT can now be configured to send ClientTransactionID's of the old format of CardEntryNo+ReceiptNo (for example 22,00000P0001000000002) instead of the default 10-digit format.

LoadFields in POS DataSet Utility

The **SetLoadFields** function is now used by default when sending data to the POS. Lookup data and other setup data only use fields that are needed for the POS.

A new check box, **Load All Sql Fields**, has been added to the **POS Data Table Card**. If the check box is selected, the POS will not use the **SetLoadFields** function when sending data for that Data Table.

BackOffice

Creating and Posting Customer Orders With Decimals in Quantity

Metered items can now be entered in Customer Orders with decimal quantity. Metered items cannot be shipped partially.

Option Added to Select Line on Customer Order Cancellation Web Service

It is now possible to cancel individual lines in Customer Order through Web service.

LS Hardware Station

Print QR Code as Bitmap

PrintBitmapBlob functions have been added to the LSC POS Print Utility codeunit. These functions can be used to print bitmaps stored in Blob fields.

Replenishment

LS Central Demo Role Center - Replenishment Menu

The Replenishment menu in the LS Central Demo Role Center has been improved. The menu provides easy access to Replenishment operations and processes, such as Automatic Replenishment, Redistribution, and Retail Budgets.

Hospitality

LS Activity

LS Activity Enhancements

- If there are no date settings in the group header, the user is allowed to enter any dates in the lines.
- Enhancement for how activities are shown in a reservation:
 - Draft activities are shown in red color, if reservation status is confirmed.
 - Canceled activities are always shown in red, regardless of reservation status.

Validating Guest Membership on POS

It is now possible to check directly on the POS if a guest has a valid membership. If the membership is valid, the arrival is registered and optionally guest details are assigned to the POS journal.

A new POS command, CHECKACCESS, with optional parameter *Item Number*, has been added for this purpose.

LS Hotels

Hotel Enhancements

- Enhancements to the Room Availability update functionality to better preserve availability history.
- Enhancements to the **New Reservation** page to provide better visibility to the availability matrix.
- Republish derived rates without changing base rate to update OTA rates.
- Used deposit lines in the invoice Management card are shown in green.
- Improved logging of trace data and debugging for reservations.
- Performance enhancements for hotel reservations.
- **Occupancy Report** page added to Role Center.
- Tape Chart enhancement
 - Group comments for a reservation are also shown on the **Tape Chart** when hovering over the reservation.

- Reservations can be un-allocated from a room by right-clicking the reservation and selecting *Unallocate*.
- Hotel property name shown on *Tape Chart*.
- Performance on *Tape Chart* has been improved.

LS Retail Apps

LS Central AppShell

LS Central AppShell for Windows version 3.0

LS Central AppShell for Windows version 3.0 has been released. This version fixes the problem with Windows AppShell v2.x not working with LS Central 19.0 and newer versions.

There are known issues in the version: Dual Display is not working and selecting list items in Business Central only works using the keyboard buttons.

The problems are being worked on and a workaround will be announced as soon as it is available.

POS Commands

The following POS command is new in LS Central 19.1:

- CHECKACCESS - Check members' membership and access.

See "POS Commands" in the [LS Central Help](#) and the corresponding [Excel](#) list with filters for a complete list of POS commands.

Other

LS Central Help

The **LS Central Product Overview**, which used to be included in the [Operational Guidelines](#) on the LS Retail Portal, has been moved to the [LS Central Help](#).

LS Central Demo Data Company

A demo data package is now available on the [LS Retail Portal](#). The package includes configuration packages (rapid start files) and retail images in zip files that you can import into LS Central and build the LS Central Demo Data Company. The package includes step-by-step guidelines for your convenience.

Fixed Issues

Retail

General

EFT Slips Embedded With Void Transaction Receipt

EFT slips are now embedded with the Void Transaction Receipt.

Error in Debug Log Fixed

A bug has been fixed where the **Debug Log Setup** table was constantly being updated.

Fields With Obsolete State "Pending" Are not Replicated

An update filter has been applied to the Field table. From version 19 onwards, fields with `ObsoleteState=Removed` instead of `No` are excluded.

MaxLines Parameter Added to Web Service

MaxLines parameter has been added to the GetActionsFromRemoteDBV2 web service to prevent resource overflow.

Package not Created for Scheduler Job Using "Transfer Field List Exists"

When running a subjob using Replication Method set to *Normal*, and an enabled Transfer Field List Exists and Exclude Fields, a Scheduler job did not create a package in the Web Replication Request Queue. This has been resolved by adding a filter on Obsolete Fields in the **Exclude Field** list.

Public Access to CalcPrices() Procedure

Public access is now given to the CalcPrices() procedure in record POS. Trans Line through the POS View codeunit.

Tag Function in LS Central Upgrade Codeunit

Tagging after running LS Central Upgrade functions was missing in some cases. This has been fixed.

Update 18.4 to 19.1 not Working

On the **Select Date Period Dialog** page, the protection level of functions **SetData** and **GetData** has been changed to be accessible to other extensions. Internal protection has been removed.

BackOffice

Fashion: Variant Dimension Extension Update

To prevent a data integrity issue, changing the extension of a Variant Dimension is no longer allowed, since Extension is a primary key in the Extended Variant Dimensions and Extended Variant Values table.

LS Central POS

Customer Discounts not Working on POS

This has been fixed, and now at the POS, the system triggers the discount based on the Customer Discount Group at Retail Customer.

Error in Line Discount When Doing Refund

An error in refunding a transaction line with discount has been fixed. The error occurred when refunding a transaction containing voided lines.

Replenishment

Inventory Calculation in Replenishment Journal

An issue during Replenishment Journal calculation with Replenishment Calculation Type filter applied, where the inventories are not getting calculated for the items using Replen. Data Profile or having Item Store Records assigned with the matching Replenishment Calculation Type, has now been fixed.

Item Store Records Creation With Variant Framework Code Over 10 Characters

When creating Item Store Records using the Location and Variant Selection page for an item assign with Variant Framework, an error that occurred in the page when the Variant Framework Code used is more than 10 characters, has now been fixed.

Purchase Replenishment Journal Calculation With Warehouse Location

When calculating the Purchase Replenishment Journal, an issue where the Replenishment Journal Line for the warehouse location was being created even though the item has its Item Status set to block from purchasing, has now been fixed.

LS Central 19.0 Release Notes

About This Release

Released - November 17, 2021

This version is built on Microsoft Dynamics 365 Business Central 2021, release wave 2, build 19.0.29894.30693.

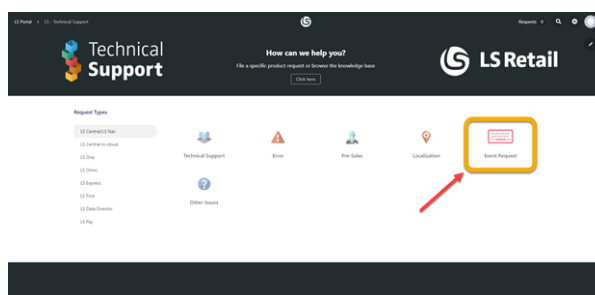
LS Central 19.0

LS Central is now delivered as two apps. Some code has been moved from the LS Central app to a new app named **LS Central System App**. The LS Central app has a dependency on the LS Central System App. The code that was moved to the LS Central System App is a code that was originally in the Toolbox .dll and is related to the POS UI. The code in the Toolbox .dll was not public, and partners could not modify the code. The code in the LS Central System app will not be public and the LS Central System App will only be published as runtime package. The LS Central System App will, in the future, hold code related to licensing to enable LS Retail to license LS Central components in the cloud.

LS Central AL code

The source code for the LS Central app is delivered in AL files that can be modified by partners. It is, however, highly recommended to make all modifications in extensions, and if you need to alter the LS Central or Business Central behavior then do that by subscribing to events.

It is LS Retail's priority to make it easy for the partners to extend LS Central. Therefore, a special section in our Support Portal (login required) is provided for partners to submit requests for new events. These requests are given priority.



LS Central extension

The release package includes LS Central and LS Central System App as runtime apps that can be installed as extensions. To install the extensions, you first need to publish them, see [Publishing and Installing an Extension v2.0](#). Once the LS Central and LS Central System App extensions have been published, the LS Central and LS Central System App extensions can be installed using the **Extension Management** page in Business Central.

Important Notice!

Scope attribute [Scope('OnPrem')] replaced with Access Property Access = Internal

As part of the journey of making LS Central AppSource compatible, the Scope Attribute *OnPrem* is being replaced with Access Property *Internal*. By using preprocessorSymbols the change only applies to SaaS deployments. This means that access to LS Central code for extension development is the same before and after the change. Those who are extending LS Central on-premises version have the same access as before, including objects/functions that were marked as [Scope('OnPrem')]. Those who are extending LS Central in the cloud do not have access to code that was marked as [Scope('OnPrem')] as it is now marked as Access = Internal. If your extension needs access to any of the Internal code, it can be requested through the Support portal as before. To grant access LS Retail will follow the design principle that Microsoft is using in the System app where access is granted through public codeunits but implementation of the code stays Internal.

“Using Access Modifiers in AL

Access modifiers are used to set accessibility of tables, table fields, codeunits, and queries, which controls whether the object can be used from other code in your module or other modules. Access modifiers in AL are designed to create solid APIs, by limiting the symbols that dependent modules can take a reference on. Limiting the API surface can hide implementation details and allow for later refactoring of code without breaking external code.” (from [Microsoft documentation "Using Access Modifiers in AL"](#))

New or Enhanced Features

Retail

General

Fields Added to the POS Interface Profile

The **Show Banner on Error** and **Show Banner on Message** fields have been added to the **POS Interface Profile Card**. If you select these check boxes, the message or error will be emphasized by being displayed in the POS's alert banner.

OnPrem Scope Removed in Codeunit 10014600 LSC Franc. - Process Inb. Ms

The procedure *CreateOutboundPurchHdr* in codeunit **LSC Franc. - Process Inb. Ms** is now available for extension development in SaaS.

New integration event for Table Management

A new event, *OnBeforeCheckProductAvailability*, has been added in Table Management. This allows external systems to reserve availability for products.

BackOffice

eCommerce Cross Border VAT Calculation for Sales Orders

- A new field, **Web Store Customer No.**, has been added to the **Countries/Regions** page.
- A new field, **ShipToCountryRegionCode**, has been added to MobileTransaction XML.

These fields (and also the existing **Ship-to Country/Region Code** on a Customer Order header) will be taken into consideration to decide which Customer No. will be set on the Customer Order and on the Calculate Basket functionality.

The only difference to previous behavior is the check that is now done on the **EU Country/Region Code** field. Having a customer per country will, for example, allow VAT to be set per country.

Suppress Search Indexing Building

A new field, **Suppress Search Index Build**, has been added to the **Retail Setup** page.

If this field is selected, the Search Index functionality will not create a background session to update the search index. This should prevent table locks and improve performance.

Sourcing Location Added to eCommerce Order

If eCommerce is sourcing from a location that is specified in the Sourcing Location Setup on the **Store Card**, the Sourcing Location ID is added to the Customer Order header when it is created.

Improvements in Statement Auto Calculation for Midnight Setup

- **Statement - Auto Calculate**
Codeunit **LSC Statement - Auto Calculate** has been improved: statements for stores with *Midnight Open* setup are created and calculated if there are relevant transactions, instead of waiting until the next day.
- **Autom. Statement Posting**
An issue has been fixed in codeunit **LSC Autom. Statement Posting**, where statements with the same date were being created whenever the codeunit was run for stores with a *Midnight Open* setup, resulting in duplicated statements.

Replenishment

Improved Excel Import and Export Functionality for Retail Budgets

The import and export functionality with Microsoft Excel spreadsheet for Retail Sales and Purchase Budgets has been improved.

Retail Sales Budgets

You can now perform import and export of the Opening Stock Value and Closing Stock Value for the budget entries, using the Microsoft Excel spreadsheet. We've stopped exporting the Closing Stock Value of the budget entries to the **Inventory Value** budget value type in the Excel spreadsheet, but will continue to support the import of this value type into the Closing Stock Value of the budget entries until LS Central version 19.1. It is advisable to start using the **Closing Stock Value** budget value type for the import.

For more information see "How to: Work with Excel (Export/Import)" for Retail Sales Budgets in the LS Central Help.

Retail Purchase Budgets

We have stopped exporting the Purchase Amount of the budget entries to the **Sales Amount** budget value type in the Excel spreadsheet, but will continue to support the import of this value type into the Purchase Amount of the budget entries until LS Central version 19.1. It is advisable to start using the **Purchase Amount** budget value type for the import.

For more information see "How to: Work with Excel (Export/Import)" for Retail Purchase Budgets in the LS Central Help.

Hospitality

General

Changes in Activity Reservation for Dining Reservation on Validation

Five info fields in the Activity Reservation are now automatically updated in the dining reservation entry on change if the activity reservation is *Confirmed* (Edit is allowed).

Other

LS Central Help

The LS Central Help now has a special section where hotfixes are listed and arranged by release versions. The section is located under **Release Notes - LS Central - [Hotfixes and Breaking Changes](#)** in the left navigation tree. There is also a link to the section in the right navigation column on the [Home](#) page.

Fixed Issues

Retail

General

Web Replication Run By Scheduler Instead of Background Session

Because of technical challenges in SaaS, running a web replication in a background session is not a viable solution. Therefore, running the web replications has been changed, so they are now run by a Scheduler job instead of a dedicated background session.

No Rollback If Posting a Sales Order Fails

If a posting of a Sales Order created from a Customer Order fails, the system now performs a check and posts the sales order again without posting a second time an already posted payment .

LS Central POS

POS Close Contains Tenant in the URL

The URL now contains the tenant as well as the company parameter when the POS closes.

Replenishment

Purchase Replen. Journal and Transfer Replen. Journal

Conversion overflow error in the **Purchase Replen. Journal** and the **Transfer Replen. Journal**, when calculating replenishment for items with non-whole number inventory level, has now been fixed.

Hospitality

Allocation of large groups to tables caused Allocation panel error

This bug, which occurred when large groups were being allocated to tables, has now been fixed.

Automatic allocation status change to Late and No-Show created table locking

The performance of updating automatic allocation statuses has been improved eliminating table locking.

Incorrect parent line numbers in delivery order recall

A bug, where voided items and modifiers caused wrong parent lines in a journal when a delivery order was recalled, has been fixed.

Information fields in Activity Reservation updated

When the five information fields, **Comment**, **Client Name**, **Phone numbers**, and **Email**, on an Activity Reservation are changed, corresponding information fields in the corresponding **Dining Reservation Entry** are now automatically updated, if the Activity Reservation is *Confirmed*.